



Ad-Tek's March Newsletter

What Are Calibration Intervals?

Calibration intervals are scheduled checks to maintain accuracy, preventing measurement drift and ensuring compliance.

Key Factors Affecting Frequency

1. **Manufacturer Guidelines** – Follow recommended schedules.
2. **Industry Standards** – Adhere to ISO 17025, ASTM, AASHTO regulations.
3. **Usage Frequency** – Heavily used equipment needs more frequent calibration.
4. **Environmental Conditions** – Harsh conditions require more frequent checks.
5. **Past Performance** – Review historical data to adjust schedules.

Typical Calibration Guidelines

- **Balances & Scales** – 12 months
- **Pipettes** – 3-6 months
- **Gyratories** – Annually
- **Testing Machines** – Annually **ASTM permits up to 18 mos.
- **Temperature Sensors** – Annually or as needed

Optimizing Your Schedule

- **Assess risk and prioritize critical equipment.**
- **Use tracking tools for calibration reminders.**
- **Partner with experts for compliance.**
- **Keep records for audits and trend analysis.**

****Testing Machines, Gyratories, & NCATS +etc, need to be recalibrated anytime they are moved!!**

At Ad-Tek, Inc., we specialize in providing expert calibration services tailored to your laboratory's requirements. Contact us today to discuss your calibration schedule and ensure your equipment is performing at its best!

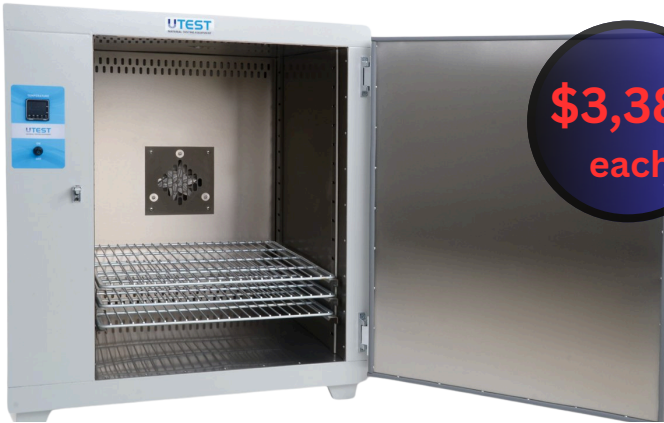
Is Your Equipment List Current?

Maintaining an accurate and up-to-date equipment list is essential for a smooth and efficient calibration process. When our technicians arrive on-site, having the correct equipment details ensures that we can allocate the right amount of time, resources, and tools needed to complete your calibrations and any necessary repairs.

March Fun Facts

- ***The Metric System's Birth** (1795, March 30) – France officially adopted the metric system, impacting global measurement standards.
- ***The Invention of the Kelvin Scale** (March 26, 1848) – William Thomson (Lord Kelvin) proposed the absolute temperature scale, widely used in laboratory calibrations.
- ***Albert Einstein's Birthday** (March 14, 1879) – Celebrate Einstein's contributions to physics and measurement science!

UTEST LAB OVEN 8.8CU FT.



\$3,385
each

TESTMARK CONCRETE AIR METER



\$734
each

We have Vitrobond In-Stock now!



Vitrobond Ingot
Capping Compound
HM-189

\$105
each

Brass Frame Brass Mesh Sieves



50% OFF
limited to stock on-hand only!

**Sizes &
Pricing
Varies**

**Thermolyne NCAT Asphalt Furnace
F85930-33**

USED Brovold Gyrotory Compactors



**Call
for
Pricing**

**Ready for
Pick-Up or
Ship from
Boring, OR**



\$13,390
each

**Starter Kits
Available &
Ready To
Ship!**

*** ITEMS LIMITED TO STOCK ON-HAND / PRICE SUBJECT TO CHANGE ***

sales@advancedcalibration.com / 503-663-7265

Remember, we typically schedule on-site calibrations 2 months in advance.